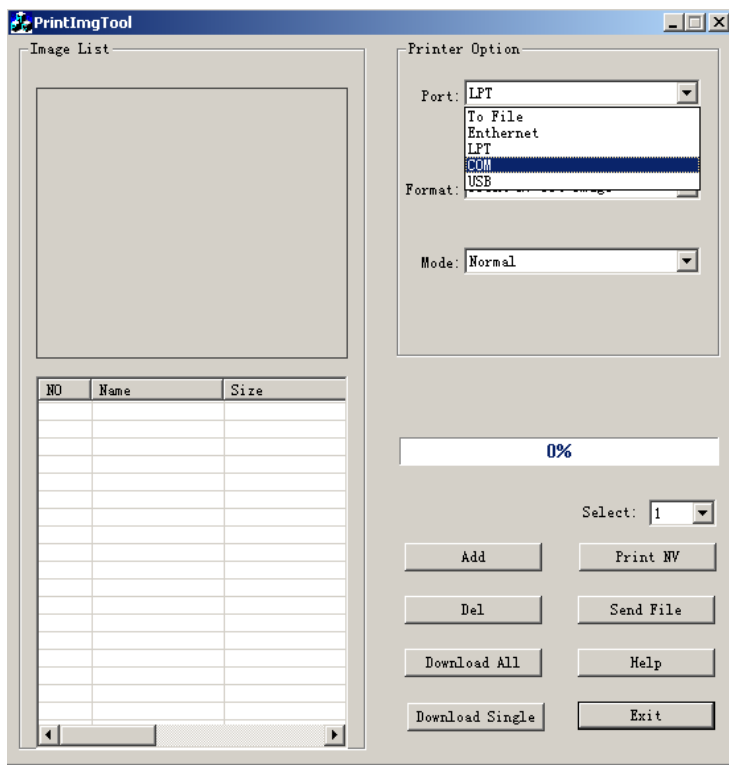
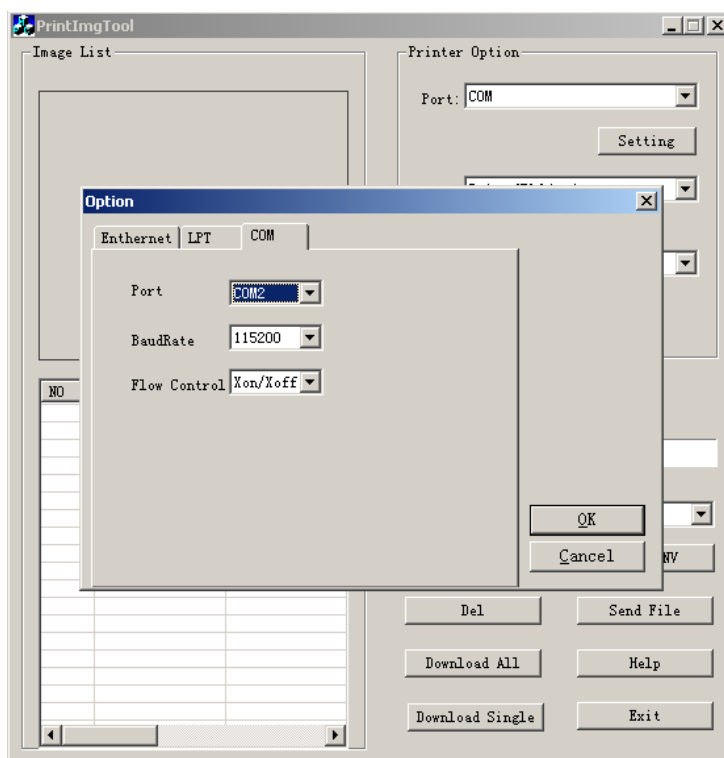


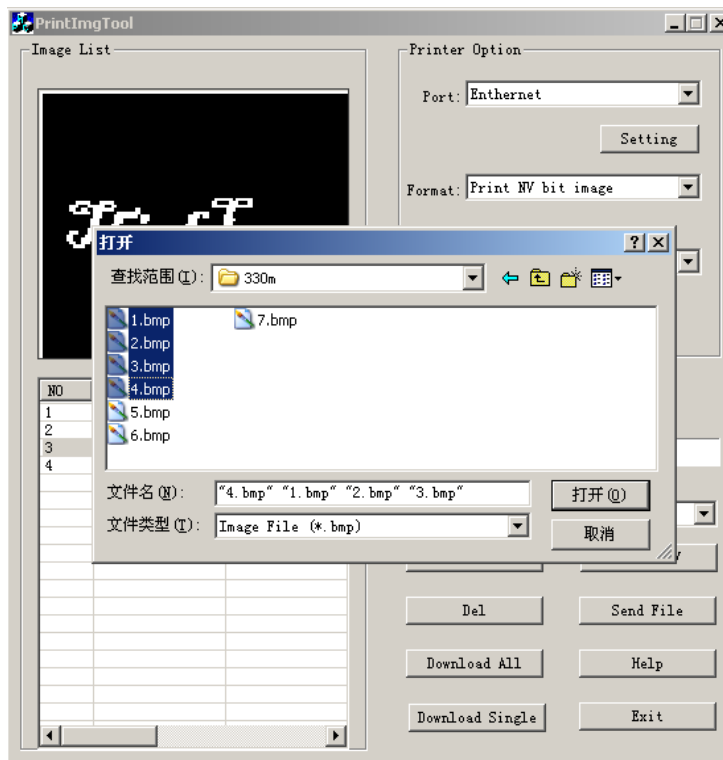
- 1) At first select the communication port which you need, click "setting", then you can configure the interface.



If it is serial interface, you'd better select flow control ,Xon/Xoff and Hardware control is optional.



2)Click "add",then you can select the logo file;



3)Select the logo which is highlighted then the chosen logo would display in the window,click "Download single", wait a moment you will get a screen display"download complete",if you get any other imformation or the printer print garbage ,the mission fail.Note that the number of the defined NV bit image is corresponding to "NO" sequence.

